

Model: UES-1,2,3-PR
 Pipe Roller Support (Adjustable)

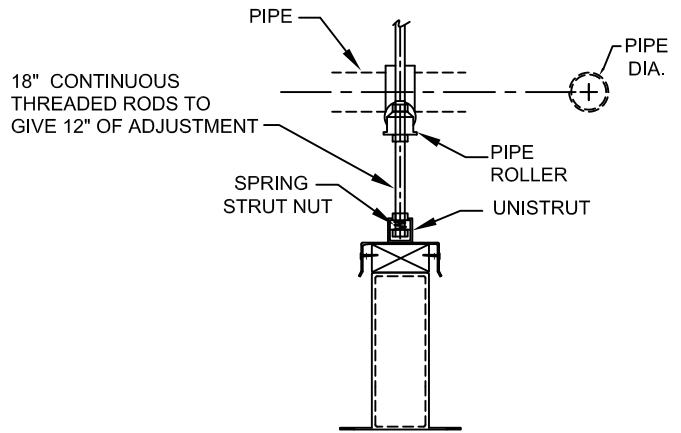
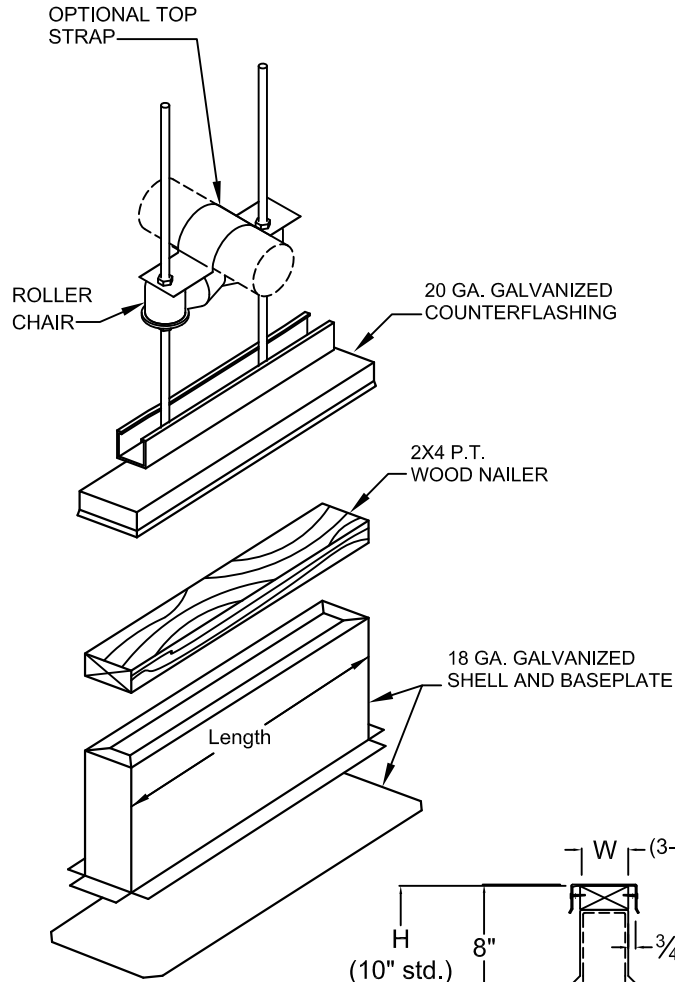
Additional Options:

Standard Construction:

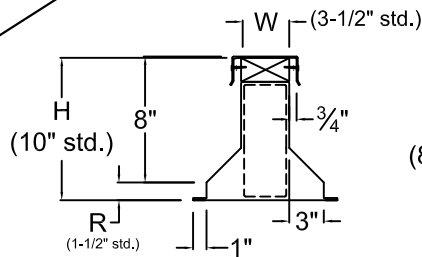
Equipment Support: 18 ga galvanized steel, 2x4 pressure treated wood nailer.
 All welds prime painted after fabrication.

Pipe Roller: Cast iron and Carbon Steel

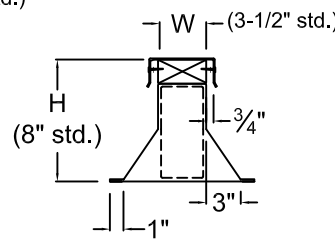
- 1.
- 2.
- 3.
- 4.



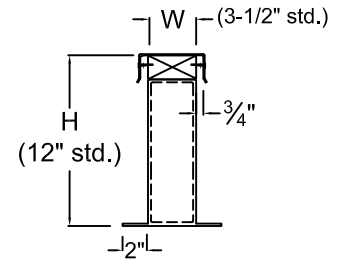
UES PIPE ROLLER SECTION
 (UES-3 SHOWN)



UES-1 SECTION



UES-2 SECTION



UES-3 SECTION

Due to continuing research, United Energetech reserves the right to change specifications without notice.

Qty.	UES Model	Length	H	R	W	Pipe Dia.	Roof Slope	Tag- Description

DRAWN BY: CLJ	DATE: 8-28-06	REV. NO. 4	REV. DATE: 1-19-11	APPROVED BY: CBY	DWG. NO.: M-8
------------------	------------------	---------------	-----------------------	---------------------	-------------------------